

# bauhaus\_werkblatt #12

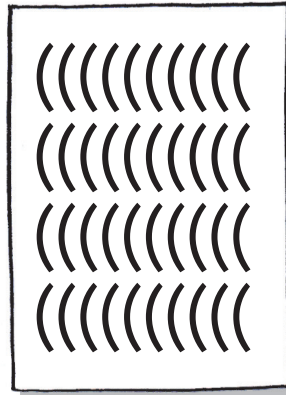
## Schreibmaschinenmuster

nach einer Vorkurs-Übung von Josef Albers

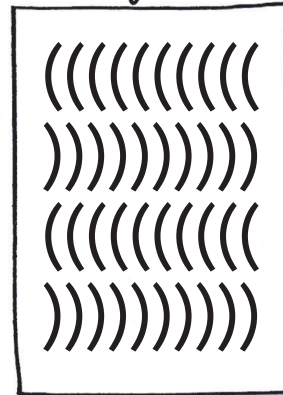


Probiere mal:

*Reihung*

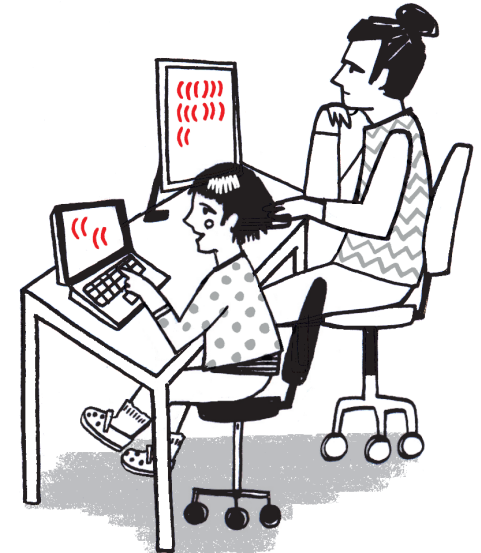
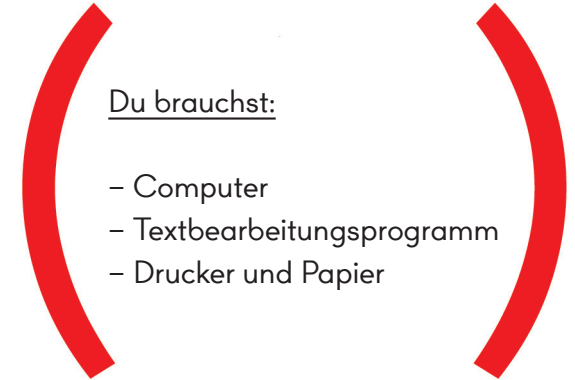


*Richtungswechsel*

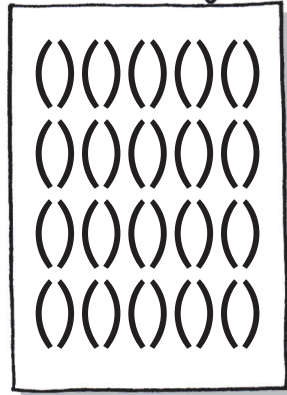


Du brauchst:

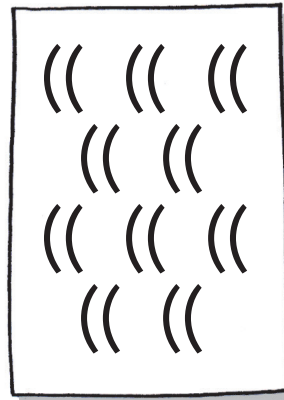
- Computer
- Textbearbeitungsprogramm
- Drucker und Papier



*Spiegelung*



*Verschieben*



*Größenkontrast*

